

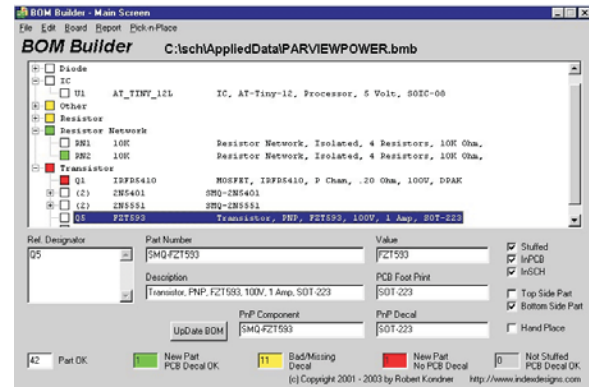
BOM Builder

Board Design Package Tool for Electrical Engineers

Index Designs

Features

- Merge Schematics, PCB, Gerbers, Data Sheets and BOM data into a single user friendly file.
- Quickly Complete BOMs for PCB Design.
- Quickly Complete BOMs for Placement Machines.
- Quickly Complete BOMs for Purchasing..
- Eliminates Missing Information for Manufacturing.
- Easily Construct BOMs for Product Variations.



Board Design Package

One of the major challenges in board assembly is to have all required design data documented and packaged into an easily exchanged format. Existing schematic capture and PCB design tools do not have the ability to organize data for purchasing, automatic assembly, or merge all the additional engineering data required to fabricate boards.

Index Designs has developed a new database application that creates a complete design package. This application, named BOM Builder, is a smart database that merges engineering schematics, PCB designs, Gerbers, data sheets and BOM components into a single, easy to use software tool.

Save Time & Errors: Reuse Data

BOM Builder takes purchasing and manufacturing databases and organizes them for reuse by design engineers. It significantly reduces the time required to generate a complete board design package. Design package errors resulting from manual editing of BOM data or from the attributes in schematic libraries are also eliminated.

When using the BOM Builder tool the engineer can be assured that their Board Design Package will be complete and supporting for quick turn assembly with no errors.

Proto SMT Assembly

Index Designs is a company that is dedicated to quick turn PCB assembly. To do this correctly we have re-engineered the process from design to the manufacturing floor. Index Designs has listened to what the design engineer required and invested years in the software development of BOM Builder.

The resulting combination of graphical displays, component data and CAD tool interfaces allows 100% complete Board Design Packages to be easily collected. These "Perfect BOMs" can be transferred to Index Designs for fabrication on our SMT line. In addition to the physical component data Advanced Assembly has organized the "Purchasing Side" as well. Engineers no longer need to spend hours locating and purchasing or kitting the many small electronic components.

How You Can Benefit

- Eliminate Attributes from Schematic Libraries.
- Simplify the integration of new components into company databases.
- Support multiple schematic capture and PCB design tools.
- Access Web Based library of PCB design decals.

Verification of Placement BEFORE board fabrication where RED part leads are shown on PCB footprints PRIOR to PCB fabrication.

